

How to configure Xming and Windows

Bedrich Benes, Ph.D.

Professor

Department of Computer Graphics

Purdue University

What we Want

- We have a Xeon Phi equipped Linux Computer
- IP: 123.456.789.012
- You have your username/password
- You want to use it remotely

© Bedrich Benes

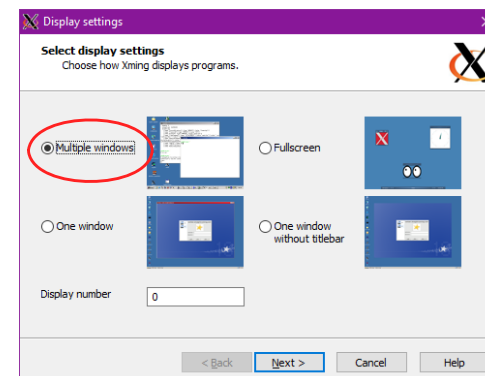
Install

- 1) putty <http://www.putty.org/>
 - Windows client for remote access to Linux
- 2) Xming <https://sourceforge.net/projects/xming/>
 - X Window System Server for Windows

© Bedrich Benes

Run

- 1) XLaunch

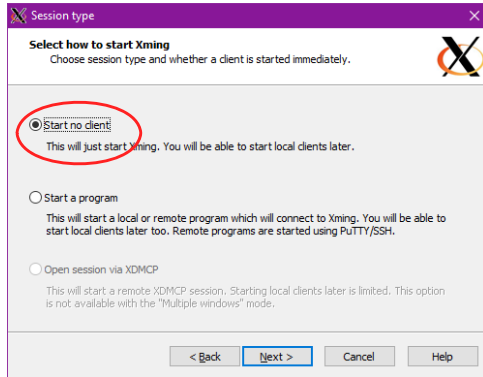


© Bedrich Benes



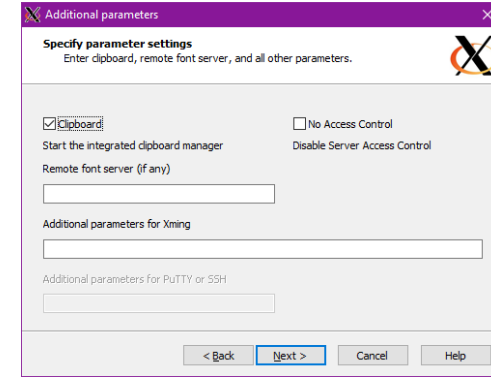
Run

2) XLaunch



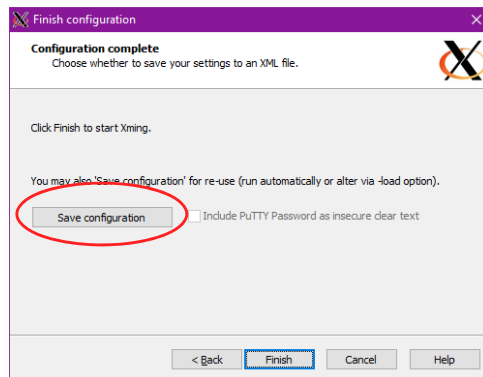
Run

3) XLaunch



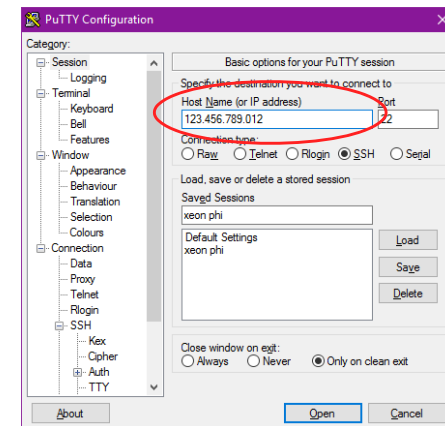
Run

4) XLaunch



Run

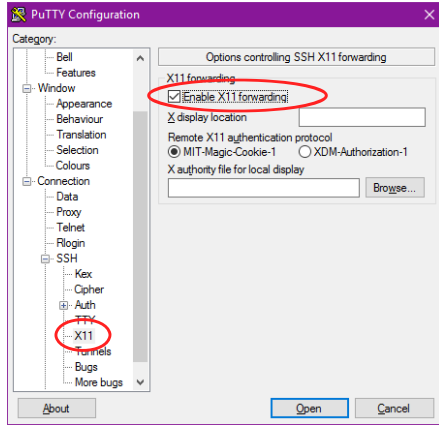
1) putty





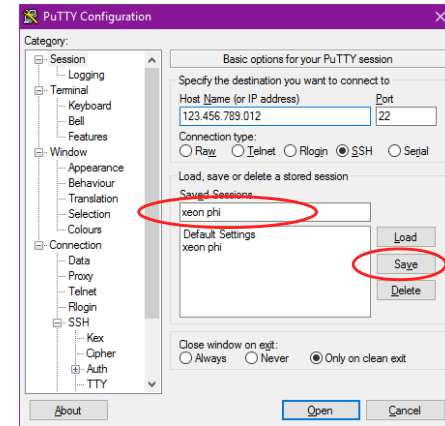
Run

2) putty



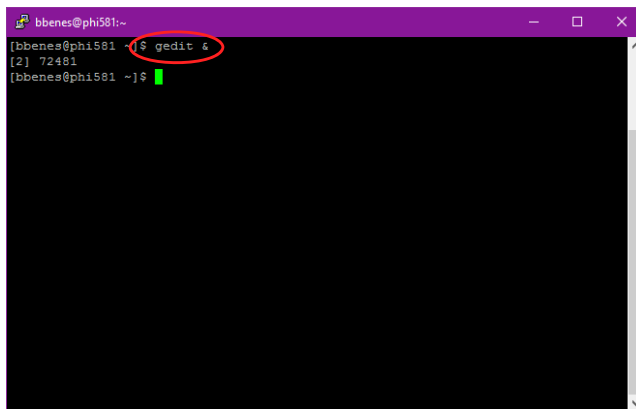
Run

3) putty



Run gedit

- Should open on local screen in Windows



Run gedit

- Should open on local screen in Windows

